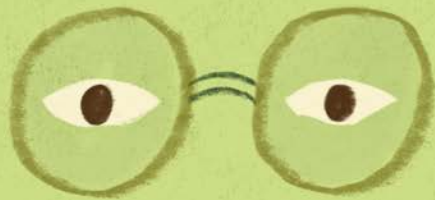
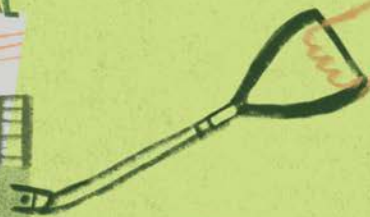


A Guide to Caring for Your Trees

By the Year 3 children
at Lindow Community
Primary School



one year ago we planted some trees and today we checked on them. we had to wear gloves so that we did not get splinters we planted about 7.



The drawings and messages in this booklet are inspired by Year 3 children from **Lindow Community Primary school** with the help and support of Dave Armson, The Mersey Forest, and Kate Pahl and Samyia Ambreen, from the 'Voices of the Future' research project. The booklet was illustrated by Maisy Summer, design by Studio Bilo. This work was supported by the Natural Environment Research Council [NE/V021370/1] and Manchester Metropolitan University. Thanks to Lindow Community Primary School for their support.

What's the Mersey Forest?

The **Mersey Forest** works with lots of people and organisations to create a growing network of well looked after trees and woods for the benefit of all.

Who is this guide for?

This guide is for schools who have planted some trees and want to know how to care for them.

Why have the children produced it?

Trees need looking after and children are the best people to do that as trees are the future.

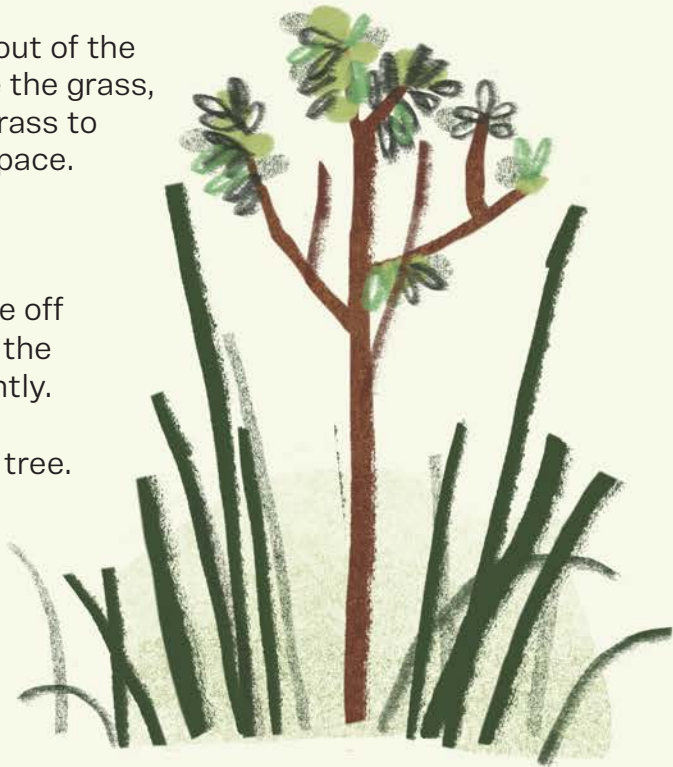


MOST TREES ARE STRUGGLING WITHOUT LIGHT, AND WITH GRASS GROWING UP THE TUBES.

Get the grass out of the tubes. Remove the grass, brushing the grass to give the tree space.

1. Take the tube off gently and pull the grass away gently.

Do not pull the tree.



Timing: All year round - but Spring and Autumn are the best time to do this.

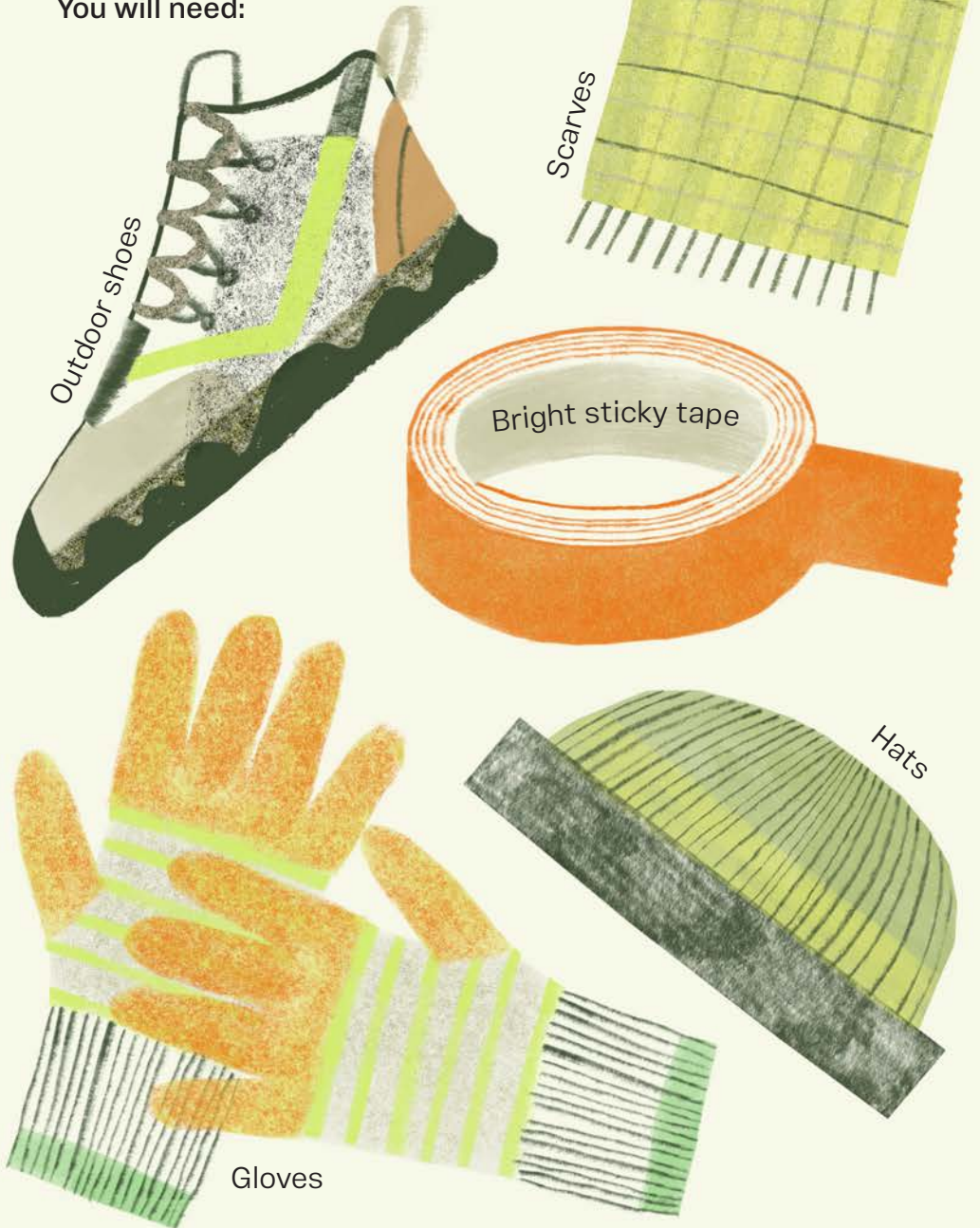
2. Put the guard back on *gently* making sure the tree and cane is inside the guard.

3. **Stomp** on the grass around the guard.



WHAT TO DO TO REPLACE THE TREES

You will need:



Timing: All year round
but easiest when the
trees have leaves on.

1. Use your eyes. Go up to every
tree and check the tree is there.

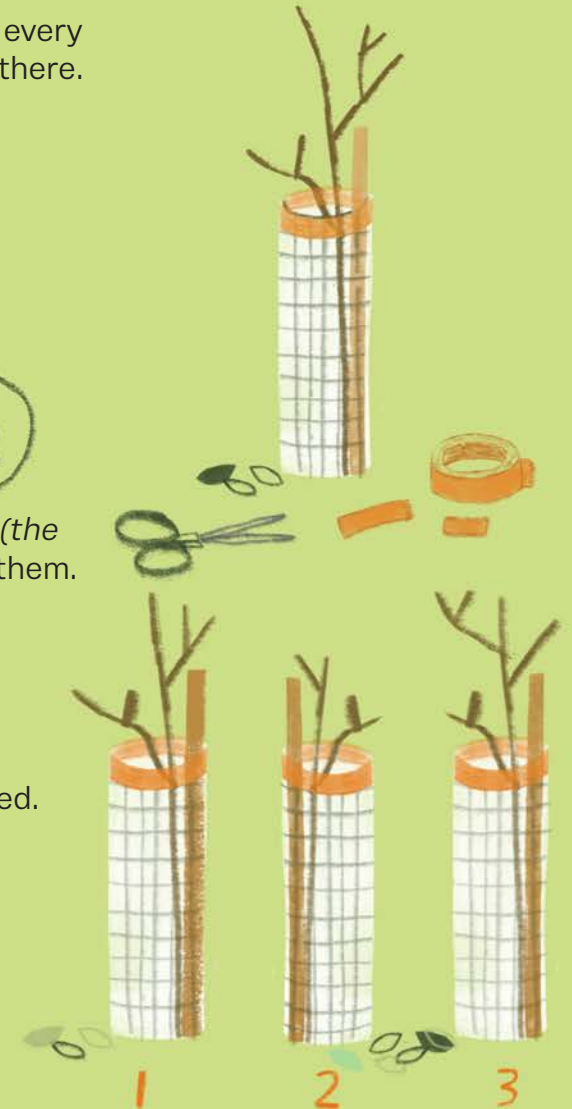
2. Put sticky tape around
the top of the cone where
the trees have *died*.



3. Look for the dead trees (*the
marked cones*) and count them.

4. Order new trees to
replace those that have died.

5. Plant the trees
(during winter).



WOODCHIP ORGANISATION

What you need:



1. Fill the buckets.

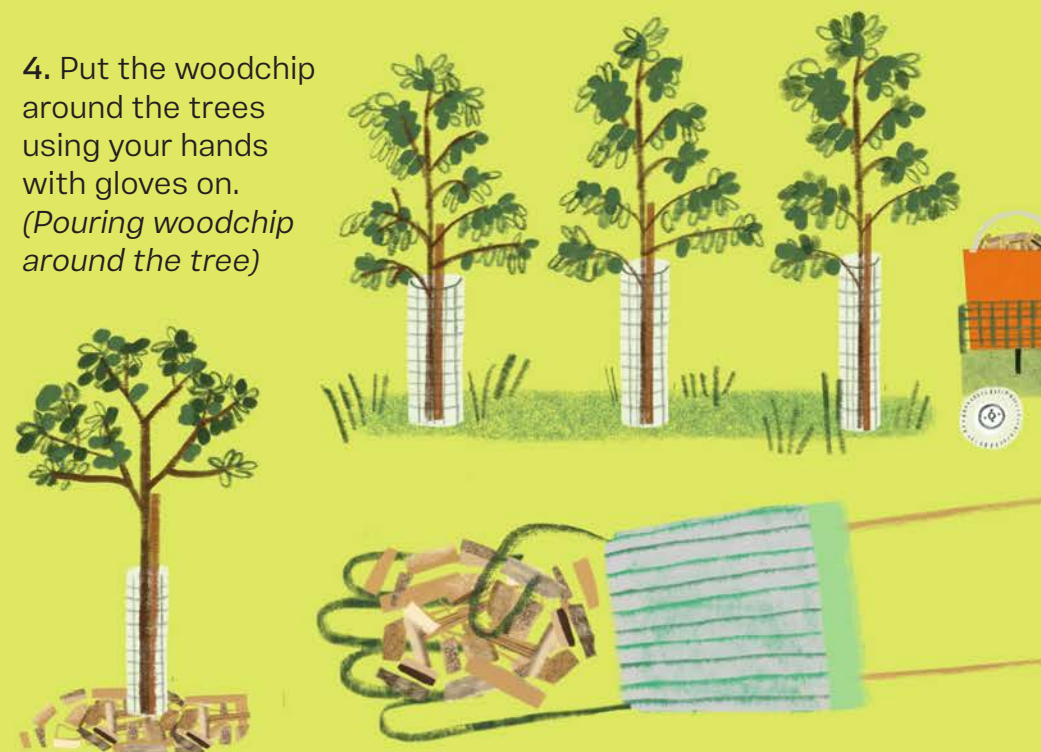


2. In partners, put the buckets onto a trolley.



3. Take the trolley, filled with woodchip, to the trees.

4. Put the woodchip around the trees using your hands with gloves on. *(Pouring woodchip around the tree)*



TEACHERS ADVICE

- If your planting was arranged by The Mersey Forest, please make contact with us as you may have funding available to complete these works.
- Woodchip can be bought in bulk bags (1 tonne). These need to be onsite as close as possible to the tree site. Please ensure you ask the supplier if they are able to get close to the planting area.
- 1 bulk bag of woodchip will cover 30 trees approximately. You can add a little more to the trees or a little less to make sure you don't over or under order.



Please make sure that the pupils are taking care not to lift too much weight, a trolley is a great way to move the woodchip.



Little and **often** is best. Regular weeding can be done every other month by a small group. Woodchip may only have to be applied once or twice a year, but this could be completed by the pupils over several short lessons, or even as a break time opportunity.





Manchester
Metropolitan
University



Natural
Environment
Research Council



Lindow
Community
Primary School



THE MERSEY
FOREST
more with trees